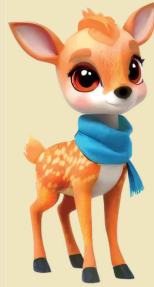




Your Online Participation Trail Map



Login To Your Account

Go to online.israelbonds.ca and login to your account*.

Select the Bond

Choose the **eShalom Savings Bond** from the list of offerings and enter **\$100** in the amount field.

Add Your Camp

Click "**+ New Holder**" and select your camp from the dropdown list. Once added, hit "**Select**" to link the camp to your purchase.

Confirm the Camp Address

On the next screen, select the camp's address before proceeding.

Pay via Direct Debit

Online purchases are **only funded via Direct Debit**. Have your Institution, Transit, and Account Numbers ready. Bank account currency must match the bond currency, as Israel Bonds does not convert currencies.

*Please note, all new Israel Bonds investors will need to complete a one-time **ACCOUNT OPENING APPLICATION** before completing their first investment trade.



Questions?

416.789.3351 · TORONTO@ISRAELBONDS.CA
ISRAELBONDS.CA

Canada-Israel Securities, Limited is registered as an Exempt Market Dealer. Please consult with your financial/tax advisor should you have any tax-related questions. Israel Bonds/Canada-Israel Securities, Ltd. does not give tax advice. Past performance is not an indicator of future performance. E/OE 2025.